



**HANSON RIVET**

**& SUPPLY CO.**  
13241 Weidner Street  
Pacoima, CA 91331

See pages D74-D88 for  
installation tools and  
machines

Phone: 818-485-0500

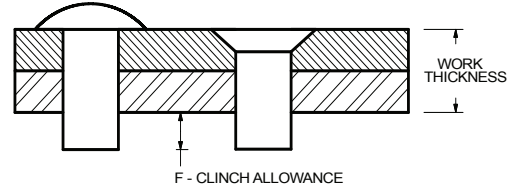
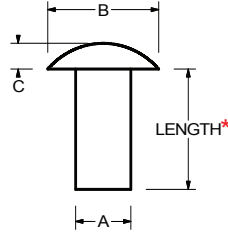
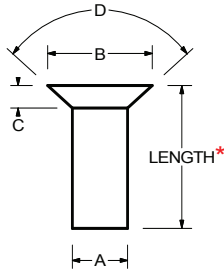
FAX: 818-485-0540

Outside CA: 1-800-RRRIVET

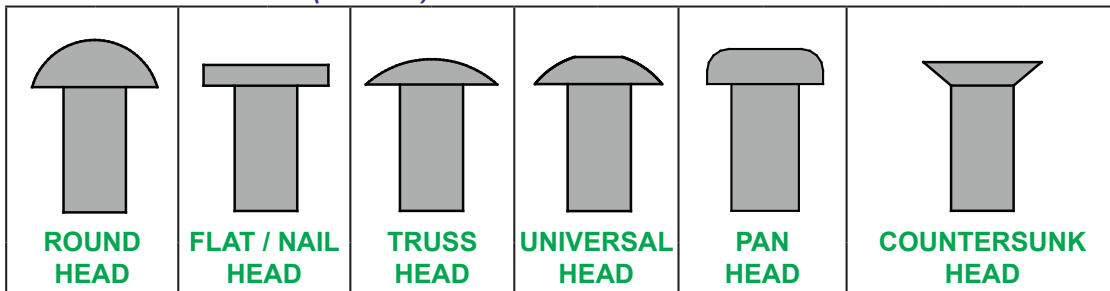
www.hansonrivet.com



# COMMERCIAL SOLID RIVETS



**\*LENGTH OF RIVET (in 16ths) = WORK THICKNESS + CLINCH ALLOWANCE "F"**



BODY DIAMETER "A"	HEAD DIA. "B"		HEAD HEIGHT "C"		HEAD DIA. "B"		HEAD HEIGHT "C"		HEAD DIA. "B"		HEAD HEIGHT "C"		C.S. DEGREE "D"	SUGGESTED CLINCH ALLOWANCE "F"	
	NOMINAL	MIN./MAX.	MIN./MAX.	MIN./MAX.	MIN./MAX.	MIN./MAX.	MIN./MAX.	MIN./MAX.	MIN./MAX.	MIN./MAX.	MIN./MAX.*	REF.			
<b>1/16</b>	.059/.064	.102/.122	.042/.052	.120/.140	.017/.027			.115/.135	.027/.037	.098/.118	.030/.040	.110/.118	.027	90°	.062
<b>3/32</b>	.090/.096	.162/.182	.065/.077	.180/.200	.026/.038	.206/.226	.026/.038	.177/.197	.039/.051	.153/.173	.048/.060	.163/.176	.040	90°	.094
<b>1/8</b>	.121/.127	.215/.235	.088/.100	.240/.260	.036/.048	.277/.297	.036/.048	.240/.260	.053/.065	.205/.225	.066/.078	.217/.235	.053	90°	.125
<b>5/32</b>	.152/.158	.268/.290	.110/.124	.301/.323	.045/.059	.348/.368	.045/.059	.301/.323	.065/.079	.257/.279	.082/.096	.272/.293	.066	90°	.156
<b>3/16</b>	.182/.191	.322/.348	.133/.147	.361/.387	.055/.069	.422/.442	.055/.069	.361/.387	.078/.092	.308/.334	.100/.114	.326/.351	.079	90°	.187
<b>1/4</b>	.244/.253	.430/.460	.180/.196	.485/.515	.075/.091	.560/.590	.075/.091	.485/.515	.104/.120	.414/.444	.135/.151	.437/.469	.106	90°	.250
<b>5/16</b>	.304/.316	.538/.572	.225/.243	.607/.641	.095/.113	.702/.732	.095/.113	.607/.641	.129/.147	.518/.552	.169/.187	.547/.588	.133	90°	.312
<b>3/8</b>	.365/.380	.646/.684	.271/.291	.731/.769	.115/.135	.848/.878	.115/.135	.731/.769	.156/.176	.625/.663	.205/.225	.656/.704	.159	90°	.375
<b>7/16</b>	.428/.443	.754/.798	.317/.339	.852/.896	.135/.157	.990/1.020	.135/.157			.728/.772	.239/.261	.765/.823	.186	90°	.438
<b>1/2</b>	.478/.520	.844/.938	.375/.406	.844/.938	.250/.281							.872/.936	.260	78°	.500
<b>5/8</b>	.600/.655	1.063/1.157	.469/.500	1.063/1.157	.313/.344							1.112/1.194	.339	78°	.625
<b>3/4</b>	.725/.780	1.281/1.390	.562/.593	1.281/1.390	.375/.406							1.322/1.421	.400	78°	.750
<b>7/8</b>	.850/.905	1.500/1.609	.656/.687	1.500/1.609	.438/.469							1.532/1.647	.460	78°	.875
<b>1</b>	.975/1.030	1.719/1.828	.750/.781	1.719/1.828	.500/.531							1.745/1.873	.520	78°	1.000

Standard materials: **STEEL • ALUMINUM • BRASS • COPPER • STAINLESS STEEL • MONEL**

Many finishes and colors are available. We also stock many non-standard sizes, please call us with your requirements.

\*NOTE: Countersunk head dimensions may be theoretical to sharp edge of head.