



HANSON RIVET

& SUPPLY CO.

13241 Weidner Street
Pacoima, CA 91331

See page D65 for
installation tools

Phone: 818-485-0500

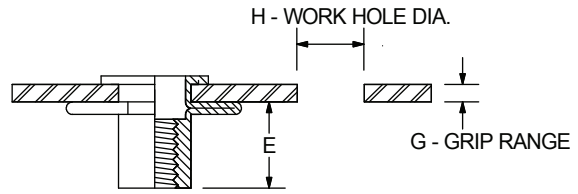
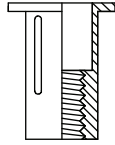
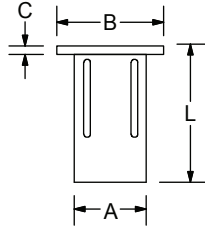
FAX: 818-485-0540

Outside CA: 1-800-RRRIVET

www.hansonrivet.com

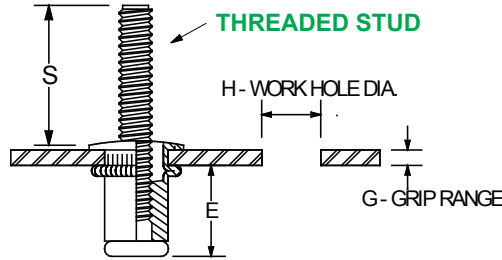
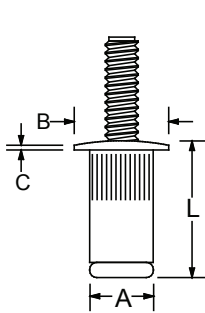


THREADED INSERTS



MULTI-GRIP INSERT

THREAD SIZE	STEEL YELLOW ZINC PART NUMBER	GRIP RANGE "G"	BODY DIAMETER (MAX.) "A"	FLANGE DIAMETER "B"	FLANGE HEIGHT "C"	LENGTH "L"	REFERENCE "E"	WORK HOLE DIAMETER "H"
1/4-20	S25MG280	.020-.280	.384	.625	.057	1.000	.520	.390
	S25MG500	.280-.500	.384	.625	.057	1.235	.520	.390
5/16-18	S31MG280	.020-.280	.482	.750	.062	1.118	.570	.488
	S31MG500	.280-.500	.482	.750	.062	1.348	.570	.488
M6-1.0	S6MG7.1	0.50-7.10	9.75	15.88	1.45	25.40	13.20	9.91
	S6MG12.7	7.10-12.10	9.75	15.88	1.45	31.34	13.20	9.91
M8-1.25	S8MG7.1	0.50-7.10	12.25	19.05	1.57	28.40	14.48	12.40
	S8MG12.7	7.10-12.10	12.25	19.05	1.57	34.24	14.48	12.40



PULL-UP STUDS

STUD THREAD SIZE	STEEL - YELLOW ZINC - PART NUMBER			GRIP RANGE "G"	BODY DIAMETER (MAX.) "A"	FLANGE DIAMETER "B"	FLANGE HEIGHT "C"	LENGTH (MAX.) "L"	REFERENCE "E"	WORK HOLE DIAMETER "H"
	THE LAST DIGITS OF PART NUMBER ARE THE STUD LENGTH "S" (AT MAX GRIP)									
6-32	PS6-32-80-500	PS6-32-80-625	PS6-32-80-750	.020-.080	.265	.390	.030	.490	.375	.266
	PS6-32-130-450	PS6-32-130-575	PS6-32-130-700	.080-.130	.265	.390	.030	.540	.375	.266
8-32	PS8-32-80-500	PS8-32-80-625	PS8-32-80-750	.020-.080	.265	.390	.030	.490	.375	.266
	PS8-32-130-450	PS8-32-130-575	PS8-32-130-700	.080-.130	.265	.390	.030	.540	.375	.266
10-24	PS10-24-130-500	PS10-24-130-625	PS10-24-130-750	.020-.130	.296	.415	.030	.545	.385	.297
	PS10-24-225-405	PS10-24-225-530	PS10-24-225-655	.130-.225	.296	.415	.030	.655	.385	.297
10-32	PS10-32-130-500	PS10-32-130-625	PS10-32-130-750	.020-.130	.296	.415	.030	.545	.385	.297
	PS10-32-225-405	PS10-32-225-530	PS10-32-225-655	.130-.225	.296	.415	.030	.655	.385	.297
1/4-20	PS250-20-165-625	PS250-20-165-8125	PS250-20-165-1000	.027-.165	.390	.500	.030	.670	.470	.391
	PS250-20-260-530	PS250-20-260-7175	PS250-20-260-905	.165-.260	.390	.500	.030	.770	.470	.391
5/16-18	PS312-18-150-625	PS312-18-150-875	PS312-18-150-1125	.027-.150	.530	.685	.035	.805	.585	.531
	PS312-18-312-463	PS312-18-312-713	PS312-18-312-963	.150-.312	.530	.685	.035	.920	.540	.531
3/8-16	PS375-16-150-750	PS375-16-150-1000	PS375-16-150-1250	.027-.150	.530	.685	.035	.805	.585	.531
	PS375-16-312-588	PS375-16-312-838	PS375-16-312-1088	.150-.312	.530	.685	.035	.920	.540	.531
M4-70	PS4-70-2.0-12.0	PS4-70-2.0-15.0	PS4-70-2.0-20.0	0.50-2.00	6.73	9.91	0.76	12.45	9.53	6.75
	PS4-70-3.3-10.7	PS4-70-3.3-13.7	PS4-70-3.3-18.7	2.00-3.30	6.73	9.91	0.76	13.72	9.53	6.75
M5-80	PS5-80-3.3-12.0	PS5-80-3.3-15.0	PS5-80-3.3-20.0	0.50-3.30	7.52	10.54	0.76	13.85	9.78	7.60
	PS5-80-5.7-9.6	PS5-80-5.7-12.6	PS5-80-5.7-17.6	3.30-5.70	7.52	10.54	0.76	16.64	9.78	7.60
M6-1.0	PS6-10-4.2-15.0	PS6-10-4.2-20.0	PS6-10-4.2-25.0	0.70-4.20	9.91	12.70	0.76	17.02	11.94	10.00
	PS6-10-6.6-12.6	PS6-10-6.6-17.6	PS6-10-6.6-22.6	4.20-6.60	9.91	12.70	0.76	19.56	11.94	10.00
M8-1.25	PS8-125-3.8-16.0	PS8-125-3.8-22.0	PS8-125-3.8-28.0	0.70-3.80	13.46	17.40	0.89	20.45	14.86	13.50
	PS8-125-7.9-11.9	PS8-125-7.9-17.9	PS8-125-7.9-23.9	3.80-7.90	13.46	17.40	0.89	23.37	13.72	13.50
M10-1.5	PS10-150-3.8-20.0	PS10-150-3.8-25.0	PS10-150-3.8-30.0	0.70-3.80	13.46	17.40	0.89	20.45	14.86	13.50
	PS10-150-7.9-5.9	PS10-150-7.9-20.9	PS10-150-7.9-25.9	3.80-7.90	13.46	17.40	0.89	23.37	13.72	13.50