



HANSON RIVET

& SUPPLY CO.
13241 Weidner Street
Pacoima, CA 91331

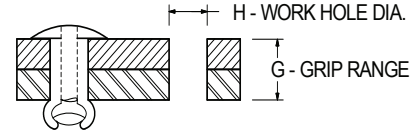
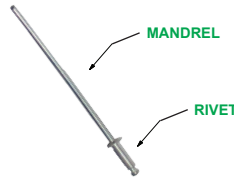
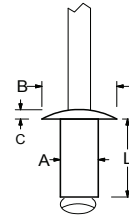
See pages D42-D47 for installation tools

Phone: 818-485-0500
FAX: 818-485-0540

Outside CA: 1-800-RRRIVET
www.hansonrivet.com

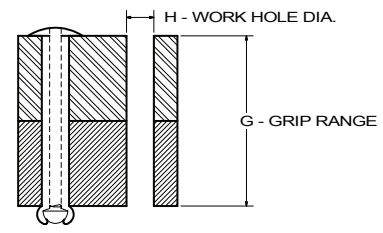
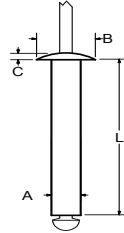


BLIND RIVETS & MUSHROOM PLUGS



MICRO RIVETS

RIVET MATERIAL MANDREL MATERIAL	HEAD STYLE	PART NUMBER	POP®	BODY DIAMETER "A"	WORK HOLE & DRILL SIZE "H"	GRIP RANGE "G"	BODY LENGTH (MAX.) "L"	HEAD DIAMETER (NOM.) "B"	HEAD HEIGHT (MAX.) "C"	TYPICAL ULTIMATE STRENGTHS IN LBS. (SEE NOTE)			
										SHEAR	TENSILE		
ALUMINUM RIVET STEEL MANDREL	DOME HEAD	PASD201	TAPD20M1BS	.078	.080/.084 #41	.000-.063	.161	.148	.029	66	87		
		PASD202	TAPD20M2BS									.039-.126	.224
		PASD203	TAPD20M3BS									.126-.189	.291
		PASD204	TAPD20M4BS									.189-.252	.354
		PASD205	TAPD20M5MS									.252-.315	.421

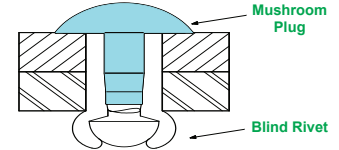
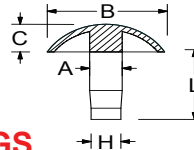


EXTRA LONG BLIND RIVETS

RIVET MATERIAL MANDREL MATERIAL	HEAD STYLE	PART NUMBER	SIZE	BODY DIAMETER "A"	WORK HOLE & DRILL SIZE "H"	GRIP RANGE "G"	BODY LENGTH (MAX.) "L"	HEAD DIAMETER (NOM.) "B"	HEAD HEIGHT (MAX.) "C"	TYPICAL ULTIMATE STRENGTHS IN LBS. (SEE NOTE)			
										SHEAR	TENSILE		
ALUMINUM RIVET PLAIN FINISH	DOME HEAD	PASD318	3 x 18	.118	.122/.126	.512-.590	.740	.242	.047	160	200		
		PASD320	3 x 20									.591-.670	.819
		PASD325	3 x 25									.671-.866	1.016
		PASD330	3 x 30	.867-1.024	1.214								
		PASD418	4 x 18	.157	.160/.164 #20	.490-.570	.740	.296	.059	190	225		
		PASD420	4 x 20									.571-.650	.819
		PASD425	4 x 25									.651-.845	1.016
		PASD430	4 x 30									.846-1.025	1.214
		PASD435	4 x 35	1.026-1.180	1.411								
		PASD440	4 x 40	1.181-1.380	1.608								
		PASD535	5 x 35	.197	.200/.204 #7	.984-1.181	1.411	.355	.063	470	630		
		PASD540	5 x 40									1.182-1.378	1.608
PASD545	5 x 45	1.379-1.575	1.805										
PASD550	5 x 50	1.576-1.770	2.002										
PASD555	5 x 55	1.771-1.890	2.199										
PASD560	5 x 60	1.891-2.047	2.396										
PASD565	5 x 65	2.048-2.244	2.593										
PASD570	5 x 70	2.245-2.440	2.790										
PASD580	5 x 80	2.441-2.835	3.184										
STEEL RIVET STEEL MANDREL	DOME HEAD	PSSD535	5 x 35	.197	.200/.204 #7	1.00-1.187	1.411	.355	.063	765	900		
		PSSD540	5 x 40									1.188-1.375	1.608
		PSSD545	5 x 45									1.376-1.625	1.805
		PSSD550	5 x 50									1.626-1.750	2.002

NOTE: SOME SIZES MAY BE AVAILABLE IN OTHER MATERIALS INCLUDING: STEEL, 304 & 316 STAINLESS. PLEASE CALL FOR AVAILABILITY.

Mushroom Plugs are decorative caps that are to be pressed or driven into the hole in the head of an installed 3/16" body diameter POP® rivet. This gives the rivet a very clean look!



MUSHROOM PLUGS

MATERIAL	HEAD STYLE	PART NUMBER	POP®	MUSHROOM PLUG IS DESIGNED TO BE USED WITH:	BODY DIAMETER "A"	TIP OF SHANK DIAMETER "H"	BODY LENGTH (MAX.) "L"	HEAD DIAMETER (NOM.) "B"	HEAD HEIGHT (MAX.) "C"
ALUMINUM	DOME HEAD	PMPA6	MPA-6	3/16" DRAWN STEEL RIVETS	.127	.116	.350	.432	.125
		PMPA6-1	MPA-6-1	3/16" EXTRUDED ALUMINUM RIVETS	.119	.108	.350	.432	.125

NOTE: Values for typical ultimate strengths are a guide only and may vary greatly depending upon the application.