

Accessories Manual

NA



HANSON RIVET[®]
& SUPPLY CO.
Phone: 800-777-4838
www.hansonrivet.com

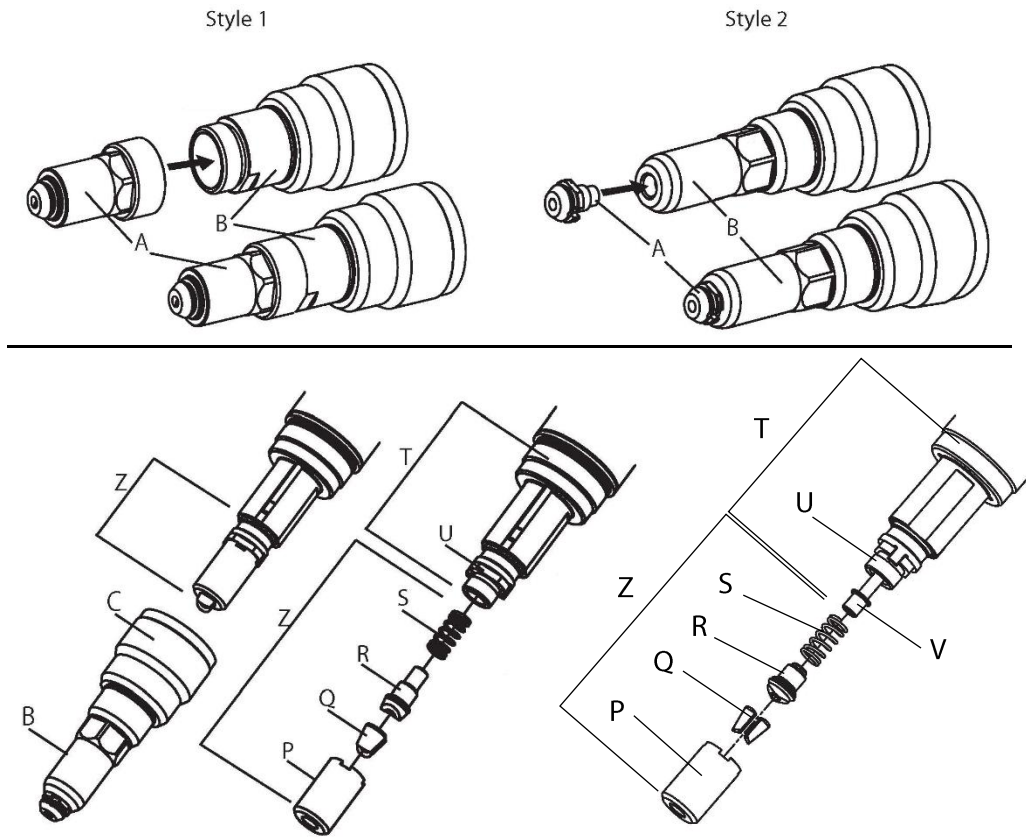
ProSet[®] PB3400 structural rivet tool

Battery Power Tool

STANLEY Engineered Fastening policy is one of continuous product development and improvement and we reserve the right to change the specification of any product without prior notice.

Nose Assemblies

Nose equipment varies according to the blind rivet type being installed. Each nose assembly represents a unique set of components which can be ordered individually. Component numbers refer to the illustration below. We recommend maintaining some stock of spares as items will need regular replacement if worn. Read the Servicing Manual for nose assembly instructions.



Fitting instructions

Mounting the nosepiece

- Select the correct nosepiece for the rivet to be installed. Reference the Accessories Manual for appropriate nose equipment.
- Tighten the nosepiece (A) into the nose housing (B) by turning it clockwise using 23 mm and 27mm or 14mm and 23mm spanner.
- Select the correct jaw pusher or jaw pusher assembly (R) and Mandrel Guide (V) that matches the Nose Piece selected. Reference the Accessories Manual for appropriate nose equipment.

NOTE: The Tail Guide that comes installed on the tool as purchased matches the installed Nose Piece. Reference the Accessories Manual for appropriate nose equipment for the actual Tail Guide part number.

- Insert mandrel guide (V) into pulling head (T) and then insert them into pulling head (T)
- Insert jaw pusher (R) into jaw pusher spring (S)
- Reassemble jaw set (Q) and jaw guide (P) onto Pulling head (T)

NOTE: Do NOT use spanners to mount jaw guide (P) onto front clutch (U). Manual tightening of Jaw guide (P) is enough to lock onto front clutch (U)

Placing capacity chart

| Rivet Type | PB3400 | | | |
|----------------------|------------------|--------|-----------------|---------------|
| | 4.8mm [3/16"] | 6.0 mm | 6.4mm [1/4"] | 8.0/9.0 mm |
| OPEN END | • | | • | |
| CLOSED END | • | | • | |
| AVEX®/ STAVEX® | • | | • | |
| AVINOX®/ AVIBULB® | • | • | • | |
| HR/HT | • | | • | |
| INTERLOCK® | | | • | |
| Hemlok® | | | | |
| KLAMP-TITE®/ KTR | • | | • | |
| BULBEX®/LS/TL | • | | | |
| MONOBOLT® | • | | • | |
| MULTI-GRIP® | • | | | |
| PULL-THRU (PT) | | | | |
| Q RIVET | • | | • | |
| T LOK® | • | | | |
| T-RIVET | • | | | |
| AVSEAL® II | | | • | • |



HANSON RIVET®
& SUPPLY CO.
 Phone: 800-777-4838
www.hansonrivet.com

Nose piece chart

| Rivet size | Rivet Type | Material (Body/Mandrel) | | | | |
|------------------|---------------------------|----------------------------------|----------------------------------|----------------------------------|----------------------------------|----------------------------------|
| | | Al/Al | Al/St Al/SS | NiCu/St NiCu/SS | St/St SS/St | SS/SS |
| 4.8mm [3/16"] | Open End | TP124-542*** or TP143-648* | TP124-542*** or TP143-648* | TP124-542*** or TP143-648* | TP124-542*** or TP143-648* | TP124-542*** or TP143-648* |
| | Closed End | TP124-546*** | TP124-546*** | - | TP124-546*** | TP124-542*** or TP143-648* |
| | AVEX® | - | TP124-542*** or TP143-648* | - | - | - |
| | STAVEX® | - | - | - | TP124-542*** or TP143-648* | TP124-542*** or TP143-648* |
| | HRrivets® | TP124-543*** | TP124-542*** or TP143-648* | - | TP124-543*** | TP124-543*** |
| | HSrivets® | - | - | - | TP124-542*** or TP143-648* | - |
| | AVINOX® | - | - | - | - | TP124-543* |
| | AVIBULB® | - | - | - | TP142-543* | - |
| | TLrivets®/ BULBEX® | TP124-542*** or TP143-648* | - | - | - | - |
| | KLAMP-TITE® BAPK series | - | TP124-546*** | - | - | - |
| | KLAMP-TITE® BAPKTR series | - | ** | - | - | - |
| | INTERLOCK® | TP143-648* | - | - | TP143-648* | TP143-648* |
| | MONOBOLT® | TP143-650* | - | - | TP143-650* | TP143-650* |
| | UG rivets (D type) | TRM00119* | - | - | TRM00119* | TRM00119* |
| | UG rivets (K type) | TP143-648* | - | - | TP143-648* | TP143-648* |
| | Q Rivet | TP124-542*** or TP143-648* | TP124-542*** or TP143-648* | - | TP124-542*** or TP143-648* | TP124-542*** or TP143-648* |
| T LOK® | - | - | - | TP124-542*** or TP143-648* | - | |
| T Rivet | - | TP143-648* | - | - | - | |

* Not included with the PB3400-standrad tool kit

** Klamp-Tite KTR series requires a special Nosepiece, Contact Application Engineering

*** Not included with the PB3400-standrad tool kit and SA nose housing TP143-594 for option is required to use



TP124-542
TP124-546
TP124-543



TRM00119
TP143-648



TP143-650



HANSON RIVET®
& SUPPLY CO.
Phone: 800-777-4838
www.hansonrivet.com

Bold : Equipped on the tool **Grey** : Included with Standard Kit

| Rivet size | Rivet Type | Material (Body/Mandrel) | | | | |
|-----------------|---------------------------|--|--|--|--|--|
| | | Al/Al | Al/St Al/SS | NiCu/St NiCu/SS | St/St SS/St | SS/SS |
| 6.4mm [1/4"] | Open End | - | TP144-593*** or TP143-646 | TP144-593*** or TP143-646 | TP144-593*** or TP143-646 | - |
| | Closed End | - | TP144-640*** | - | - | - |
| | AVEX® | - | TP144-593*** or TP143-646 | - | - | - |
| | STAVEX® | - | - | - | TP144-593*** or TP143-646 | - |
| | HRrivets® | - | TP144-593*** or TP143-646 | - | TP144-657*** | - |
| | HSrivets® | TP144-593*** or TP143-646 | - | - | TP144-593*** or TP143-646 | - |
| | AVINOX®XT | - | - | - | - | TP143-665* |
| | AVIBULB® (6mm) | - | - | - | TP144-593*** or TP143-646 | - |
| | AVIBULB®XT | - | - | - | TP143-665* | - |
| | KLAMP-TITE® BAPK series | - | TP144-593*** or TP143-646 | - | - | - |
| | KLAMP-TITE® BAPKTR series | - | ** | - | - | - |
| | INTERLOCK® | TP143-646 | - | - | TP143-646 | TP143-646 |
| | MONOBOLT® | TP143-652 | - | - | TP143-652 | TP143-652 |
| | HEMLOK® | TP143-646 | - | - | TP143-646 | - |
| | UG rivets (D type) | TRM00115* | - | - | TRM00115* | TRM00115* |
| | UG rivets (K type) | TP143-646 | - | - | TP143-646 | TP143-646 |
| | Q Rivet | TP144-593*** or TP143-646 | TP144-593*** or TP143-646 | - | TP144-593*** or TP143-646 | TP144-593*** or TP143-646 |
| T Rivet | - | TP143-646 | - | - | - | |

* Not included with the PB3400-standrad tool kit

** Klamp-Tite KTR series requires a special Nosepiece, Contact Application Engineering

*** Not included with the PB3400-standrad tool kit and SA nose housing TP143-594 for option is required to use



TP144-593
TP144-640
TP144-657



TP143-665
TRM00115
TP143-646



TP143-652



HANSON RIVET®
& SUPPLY CO.
Phone: 800-777-4838
www.hansonrivet.com

Jaw and Jaw pusher chart

Bold : Equipped on the tool

| Rivet size | Rivet type | SA Nose housing | SA Jaw Pusher | Mandrel Guide |
|--------------------|---|--------------------------------------|---------------|---------------|
| 4.8mm [3/16"] | Open End | TP143-594* or | TRM00542* | TRM00543* |
| | Closed End(SS/SS) | TP143-643 | | |
| | Closed End(Al/Al, Al/St, St/St) | TP143-594* | | |
| | AVEX [®] | TP143-594* or TP143-643 | | |
| | STAVEX [®] | | | |
| | HRrivets [®] (Al/St, Al/SS) | | | |
| | HRrivets [®] (Al/Al, St/St, SS/SS) | TP143-594* | | |
| | HSrivets [®] | TP143-594* or TP143-643 | | |
| | AVINOX [®] | | | |
| | AVIBULB [®] | | | |
| | TLrivets [®] / BULBEX [®] | | | |
| | KLAMP-TITE [®] BAPK series | | | |
| | KLAMP-TITE [®] BAPKTR series | TP143-594* | | |
| | INTERLOCK [®] | TP143-643 | | |
| | MONOBOLT [®] | | | |
| | UG rivets (D type) | | | |
| | UG rivets (K type) | TP143-594* or | | |
| Q Rivet | | | | |
| T LOK [®] | | | | |
| T Rivet | TP143-643 | | | |

* Not included with the PB3400-standrad tool kit

** Requires to be removed, if there is a mandrel guide in the tool



TP143-643



TP143-594



TRM00542



TRM00543



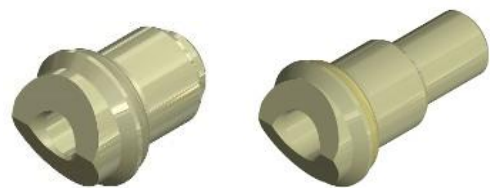
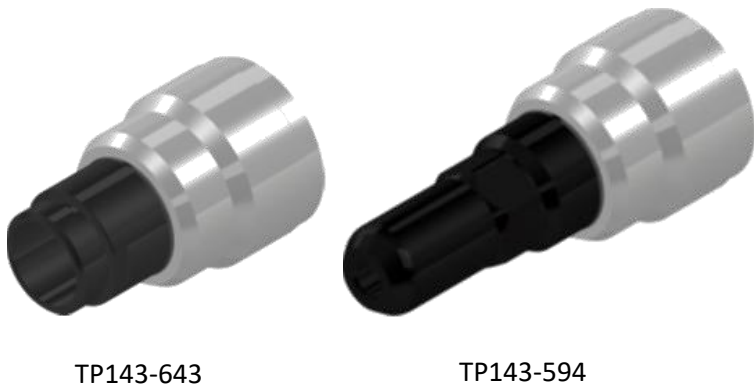
HANSON RIVET[®]
& SUPPLY CO.
 Phone: 800-777-4838
www.hansonrivet.com

Bold : Equipped on the tool

| Rivet size | Rivet type | SA Nose housing | SA Jaw Pusher | Mandrel Guide |
|--------------------|---------------------------------------|--------------------------------------|-----------------|-----------------|
| 6.4mm [1/4"] | Open End | TP143-594* or TP143-643 | TRM00502 | TRM00393 |
| | Closed End | TP143-594* | | |
| | AVEX [®] | TP143-594* or TP143-643 | | |
| | STAVEX [®] | | | |
| | HRrivets [®] (Al/St) | | | |
| | HRrivets [®] (St/St) | TP143-594* | TP144-655* | Unnecessary** |
| | HSrivets [®] | TP143-594* or TP143-643 | TRM00502 | TRM00393 |
| | AVIBULB [®] (6mm) | | | |
| | AVINOX [®] XT | TP143-643 | TP144-655* | Unnecessary** |
| | AVIBULB [®] XT | | | |
| | KLAMP-TITE [®] BAPK series | TP143-594* or TP143-643 | TRM00502 | TRM00393 |
| | KLAMP-TITE [®] BAPKTR series | TP143-594* | TRM00542* | TRM00543* |
| | INTERLOCK [®] | TP143-643 | TRM00502 | TRM00393 |
| | MONOBOLT [®] | | | |
| | HEMLOK [®] | | | |
| | UG rivets (D type) | | | |
| UG rivets (K type) | | | | |
| Q Rivet | TP143-594* or TP143-643 | | | |
| T Rivet | TP143-643 | | | |

* Not included with the PB3400-standrad tool kit

** Requires to be removed, if there is a mandrel guide in the tool



HANSON RIVET[®]
 & SUPPLY CO.
 Phone: 800-777-4838
www.hansonrivet.com



Find your closest STANLEY Engineered Fastening location on [ww.StanleyEngineeredFastening.com/contact](http://www.StanleyEngineeredFastening.com/contact)
 For an authorized distributor nearby please check www.StanleyEngineeredFastening.com/econtact/distributors

| Manual Number | Issue | C/N |
|---------------|-------|--------|
| TRM00279 | B | 1901-1 |

© 2016 Stanley Black & Decker, Inc.

Avdel®, Avex®, Avibulb®, Avinox®, Avseal®, Bulbex®, DEWALT®, Hemlok®, Interlock®, Klamp-Tite®, Monobolt®, POP®, ProSet®, Stavex® and T-Lok® are registered trademarks of Stanley Black & Decker, Inc. and its affiliates. The names and logos of other companies mentioned herein may be trademarks of their respective owners. Data shown is subject to change without prior notice as a result of continuous product development and improvement policy. Your local STANLEY Engineered Fastening representative is at your disposal should you need to confirm latest information.